



ENCOMAT®



- MAST CLIMBING WORK PLATFORMS
- PERSONNEL AND MATERIAL HOISTS



[www.ssmakine.com.tr](http://www.ssmakine.com.tr)



SMS which is an Istanbul based firm, enhances its success rate emphatically with its young and contemporary staff, extensive vision and decisive structure.

SMS is the general distributor of the Utiform and Encomat companies from Spain. SMS reaches throughout Turkey with Ankara branch.

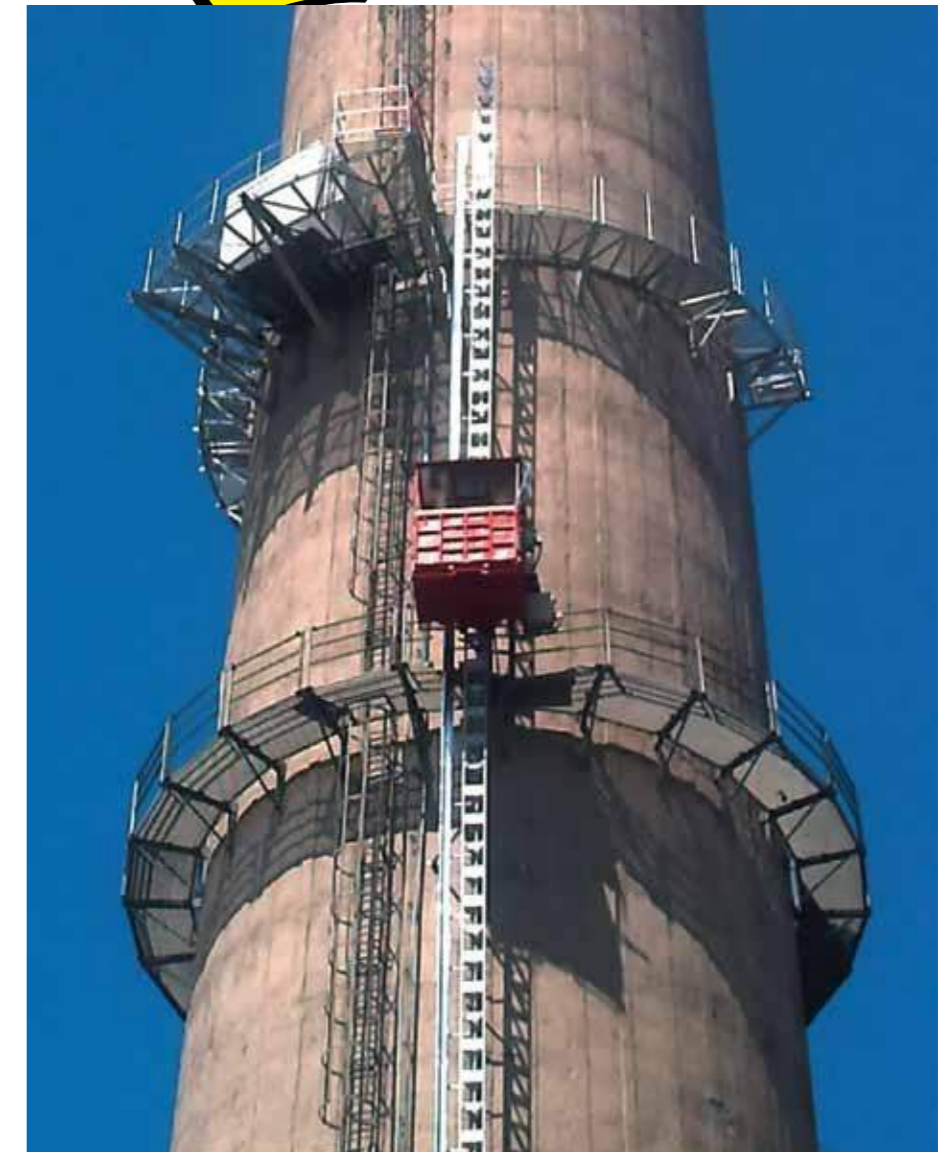
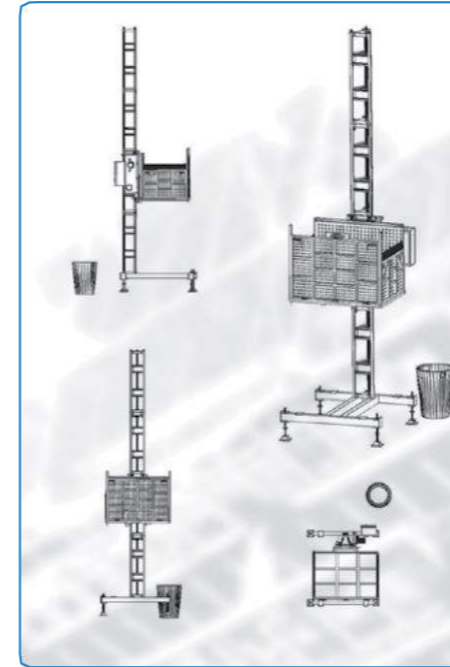
SMS, by improving its investments continuously, transferred its local success to overseas also. Day by day increases its share of foreign market by executed exporting mainly to Turkic Republics and Middle East countries.

SMS, with its experience of more than 10 years, brought in a very different competition by presenting branded products in the world to market of Turkey.



SMS gives great importance to after-sales spare parts and delivery service. Offers economical and exact solutions to our business partners with original replacement parts existing in authorized services.

SMS shall carry on to bring you the most qualified brands throughout the world with economical prices by following up the innovations in construction sector.

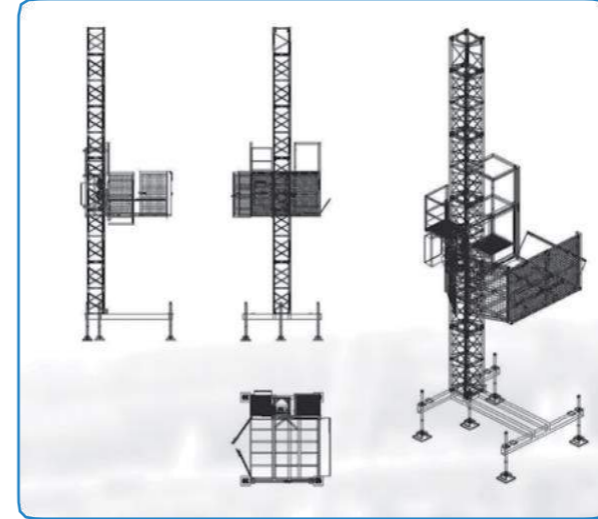


IZA 750 is an interior and exterior material hoist with high performance which you can use in constructions for the works of surface coating, paint, sheathing and for carrying construction materials to upper floors. Can be used in your intense construction works, material transporting and unloading and in places where tower crane can not reach. Easily replaceable.

Maximum Load	: 750 kg. /
Maximum Height	: 120 m. /
Nominal Speed	: 24 m/min.
Dimensions	: 1550x1070 mm.
Engine power	: 1x5.5 kw
Voltage	: 220-380 V .
Freestanding Height	: 6 m
Mast Dimensions	: 1.5 m. Triquetrous
Maximum Current	: 22.2-12 A

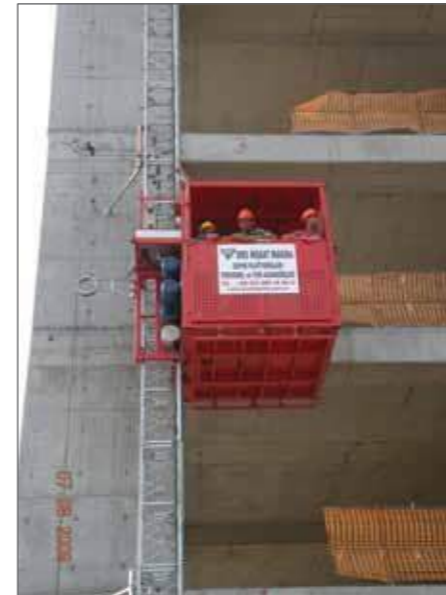
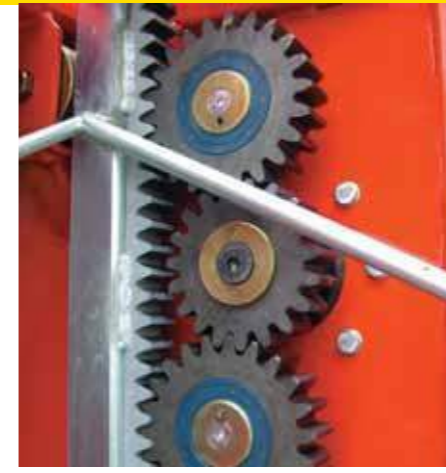


**IZA 1500**



Encomat IZA 1500 is a material hoist designed in such a way that it can enable ease in your construction works with its quicker and more secure system when compared to hoists with rope system. Operates with high and secure performance on its rock and pinion mechanism. By adjusting its floor-stop mechanism from electric panel you can allow it to stop in the intended floor. Model with the wide cabin provides ease in carrying plaque and panels.

Maximum Load	: 1500 kg. /
Maximum Height	: 150 m. /
Nominal Speed	: 24 m/min
Dimensions	: 2100x1800 mm.
Engine power	: 2x5.5 kw
Voltage	: 380 V
Freestanding Height	: 6 m.
Mast Dimensions	: 1.5 m. Kare kesitli
Maximum Current	: 32 A

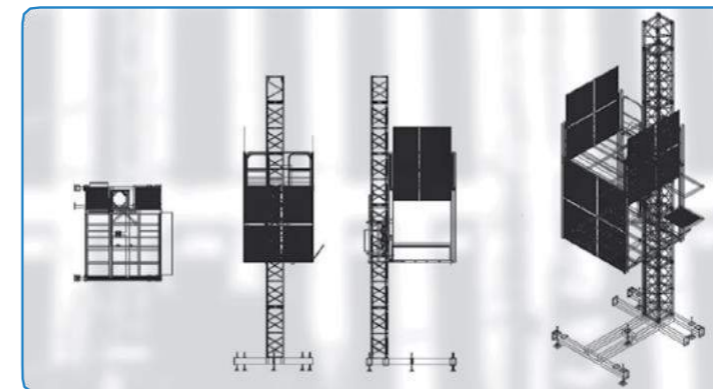
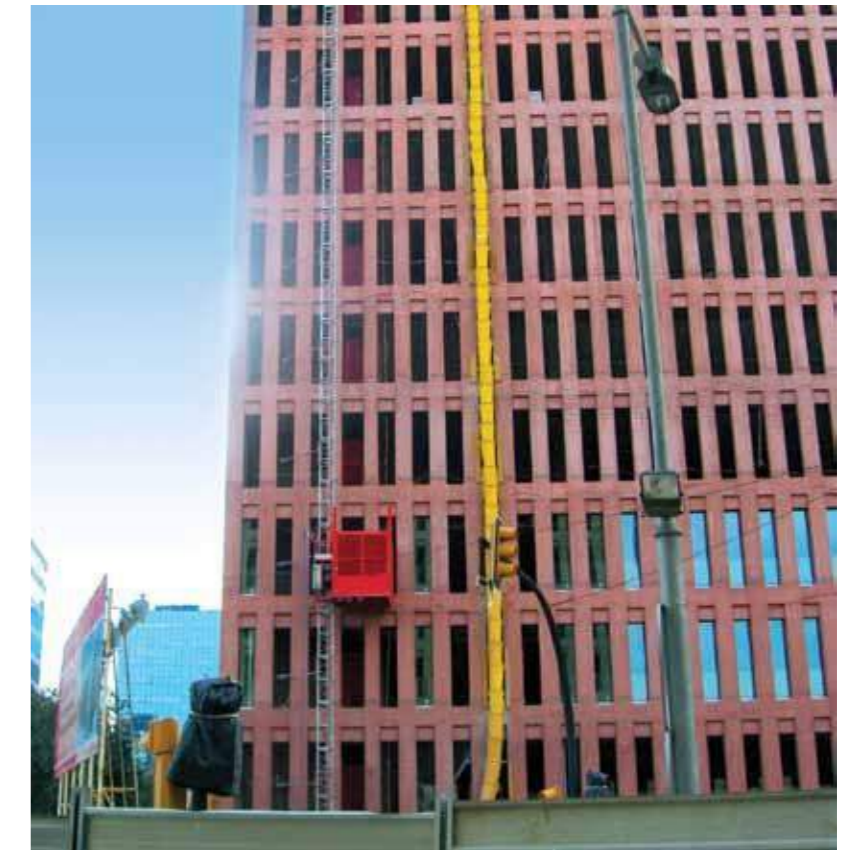


**IZA 750**  
**IZA 1500**  
**ÇATILI**

- Floor selector with no limitation on their number
- End of travel on all the cabin doors.
- Anti-crushing system, both mechanical and electronic.
- Overload detector.
- Electronic mast detector.
- Redundant upper and lower end of travel
- Motors fitted with brakes with manual release..
- Manual and automatic selector: choice of operation mode according to the needs of each job.
- Audible movement warning system
- Emergency stop.
- Parachute brake system.

Encomat IZA 750 and ROOFED 1500 , used in personnel and load carrying purposes economically. Roof system mounted on top of it is for the purpose of preventing against external factors. Operates with high security on its control rod mechanism. Floor-stop mechanism can be adjusted from electric panel and allows to be able to stop in floors.

	<b>IZA 750</b>	<b>IZA 1500</b>
Maximum Load	750 kg.	1500 kg. /
Maximum Height	120 m.	150 m. /
Nominal Speed	24 m/min.	24m/min
Dimensions	1550x1070 mm.	2000x1800 mm.
Roof Height	2020 mm.	2020 mm.
Engine Power	1x5.5 kw	2x5.5 kw
Voltage	380 V	380 V 1 /
Freestanding Height	6 m.	6 m. u /
Mast Dimensions	1.5 m.	1.5 m.
Maximum Current	22.2 -12 A	32 A



Used with the purpose of carrying material and personnel to floors with its completely closed cabin.

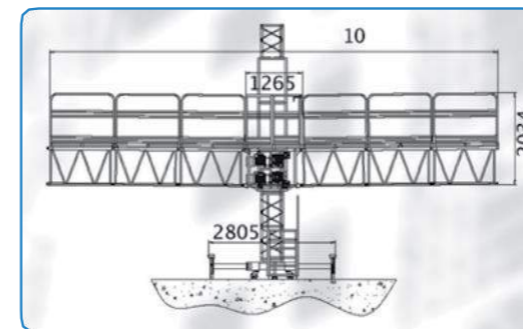
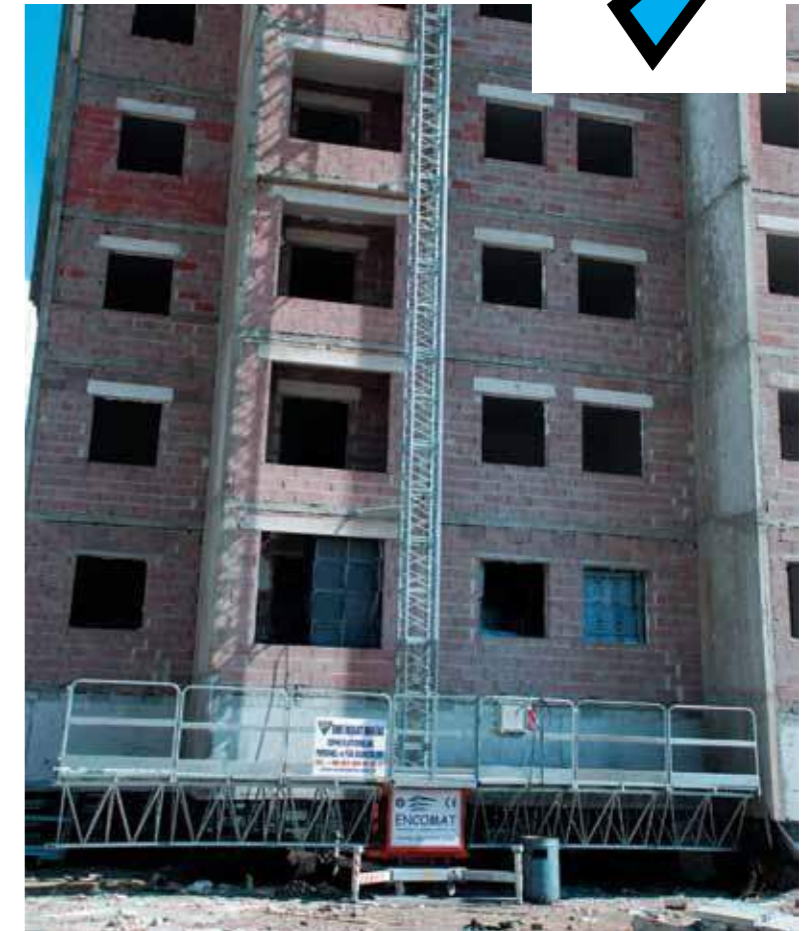
- Parachute brake system.
- Over load control system.
- Electronic mast detector.
- Security switch in all doors within the cabin.
- Guillotine cabin door.
- Frequency convertor. (Allows soft depart and stop)
- Gate to reach the roof within the cabin
- Manual landing lever in case of power outage.
- Communication system by diaphone within the cabin.
- Standard emergency light inside the cabin.

**IZA**  
**PAX 16**  
**PAX 12**



**IZA PAX 16**

Maximum Load	: 1500 kg. or 16 person
Nominal Speed	: 40m/min.
Maximum Height	: 150 m.
Cabin Dimensions	: 2550x1400x2020 mm.
Mast Dimensions	: 525x525x1500 mm. ) /
Cabin Weight (full)	: 1800 kg.
Engine power	: 2x5.5 kw
Voltage	: 380 V
Mast Dimensions	: 1.5 m.square cross section
Maximum Current	: 25/30 A



Encomat single mast work platform which can ascend and descend on the square section mast with the electric motor power can be used also in the existing buildings' every kind of interior and exterior works such as maintenance, repair, glass, aluminum, granite coating, sheathing, dyeing, surface coating as well as in new construction projects. Provides high work security, saving of time and labor, productivity and low labor costs.

10 m. platform can be used with anchorage as longitudinal and up to 150 m height. For heights more than 150 m. special anchorage systems is used.

#### BASIC SECURITY SYSTEMS

- Brake system with double motor.
- Automatic platform balancing system.
- Emergency stop system.
- Movement limiting in the last column.
- Column end detector.
- Manual landing system in emergency cases.
- Last column with half length.
- Anti-skid galvanized floor.
- Audible movement warning system.

#### Single Work Platform

Maximum Height	: 150 m. /
Maximum Width	: 10 m. /
Platform Width	: 1360 mm.

#### Electrical Specifications

Nominal Speed	: 7 m/min
Engine power	: 2x2.2 kw
Voltage	: 380 V /
Maximum Current	: 12 A

#### Mast

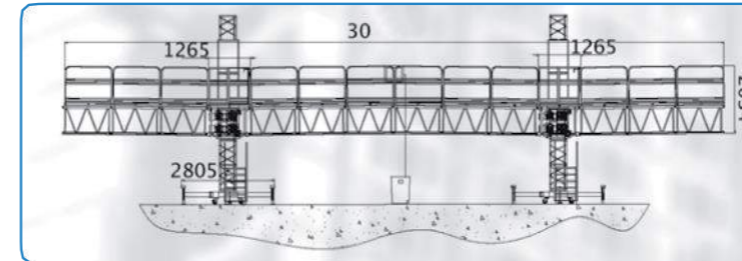
Dimensions	: 525x525x1500 mm.
Mast Weight	: 74 kg.
Freestanding Height	: 6 m.

#### Platform Section

Dimensions	: 1500x1360x870 mm.
Weight	: 75 kg.
Weight (ground sheet metal and back safety rail included):	125 kg.
Complete weight (Floor+barrier)	
Extension	: 900 mm.
Special Extension (optional)	: 1800 mm.

30/100  
TEK  
KOLON

# 30/100 ÇİFT KOLON



Encomat double mast work platform which can ascend and descend on the square section mast with the electric motor power can be used also in the existing buildings' every kind of interior and exterior works such as maintenance, glass, aluminum, granite coating, sheathing, dyeing, surface coating as well as in new construction projects. Provides high work security, saving of time and labor productivity and low labor costs. 30 m. platform can be used with anchorage as longitudinal and up to 150 m. of height. For heights over 150 m. special anchorage system is used.

## BASIC SECURITY SYSTEMS

- Brake system with double motor.
- Automatic platform balancing system.
- Emergency stop system.
- Movement limiting in last column.
- Column end detector.
- Manual landing system in emergency cases.
- Last column with half length.
- Anti-skid galvanized floor.
- Audible movement warning system.

<b>Twin Work Platform</b> Maximum height	: 150 m. /
Maximum Width	: 30 m.
Platform Width	: 1360 mm.

## Electrical Specifications

Nominal Speed	: 7 m/min
Engine power	: 4x2.2 kw
Voltage	: 380 V /
Maximum Current	: 24 A

## Mast

Dimensions	: 525x525x1500 mm.
Mast Weight	: 74 kg.
Freestanding Height	: 6 m.

## Platform Section

Dimensions	: 1500x1360x870 mm.
Weight	: 75 kg.
Weight (ground sheet metal and back safety rail included)	: 125 kg.
Complete weight (Floor+barrier)	
Extension	: 900 mm.
Special Extension	: 1800 mm.





**SMS İNŞAAT MAKİNE SANAYİ VE TİCARET LTD. ŞTİ.**

**Ankara**

Sarayköy keresteciler Sanayi sitesi 1. Cadde no:27 KAZAN/ANKARA  
Tel : +90 312 394 14 76 - 77 • Faks: +90 312 394 14 75

**İstanbul**

Atatürk Mah. Sedef caddesi Ataşehir Residence A blok daire:79  
Ataşehir / İSTANBUL

Tel : +90 216 565 74 78 - 565 79 97 • Faks: +90 216 565 44 31

Web: www.smsmakine.com.tr • e-mail: info@smsmakine.com.tr